

Schistocerca gregaria

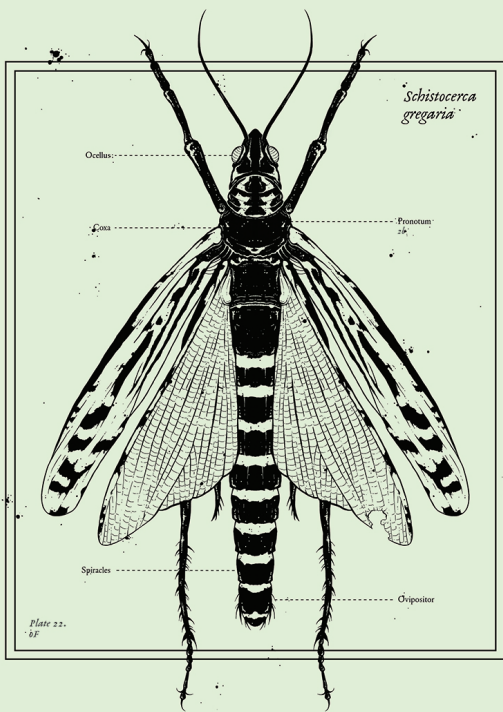


Plate 22.
6F

GROUND.
CONTROL

LOCUST

DISCRETE DISTORTION

The Locust pushes discrete silicon amplification into loud and sluggish distortion territory. The two mid-notch depth modes and tone controls will enable you to dial in ear-piercing highs for lead parts just as well as deep, dark and swamy growls for heavy rhythmic riffing while, on low gain modes, the Locust will still give you solid, warm overdriven tones.



VOLUME

Controls how loud the final output is



GAIN

Feeds more of the input signal to the gain stages



DEPTH

Controls the depth of the low-mids notch



STONE

Controls the center point of the low-mids bandpass